

## What can the solution power?

### Common uses of power and the power required

- can light up 30 PCS (400W)
- Geysers 6 ( 2kw geysers)
- 1 x 20horse power electric and pump for irrigation.
- Borehole pump 1 hp (800w)
- Buster pump (400w)
- An electric gate is about (100W)
- Microwave average (1200W)
- Laptop (60W)
- Welding machines from (4000W)
- Drill (1200W)
- Air conditioning units (500W - 2500W)
- Elevator (500W - 1000W)
- Vacuum cleaner (500 - 2500W)
- Oven (2000 - 5000W)
- Stove (1500 - 3000W)
- Food mixer (250W)
- Hairdryer (1800W) commercial
- Water heaters heavy-duty ( 3000 - 63000W)

[www.dige.solutions](http://www.dige.solutions)



*84 Piers Road  
Borrowdale  
Harare  
Zimbabwe  
+263 242 886987*



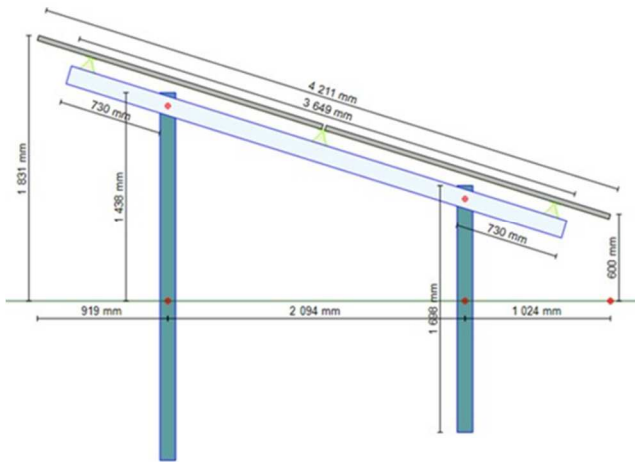
## INFORMATIONAL BROCHURE



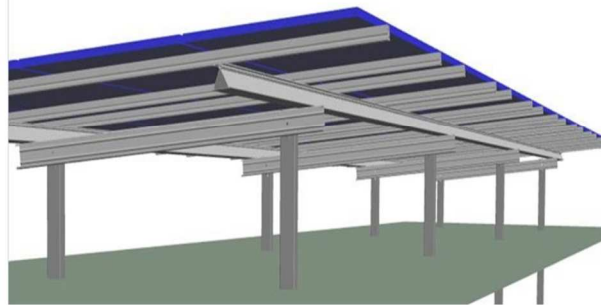
[www.dige.solutions](http://www.dige.solutions)

# Racking Structure

# Pricing and Solution Buildup



**SCHLETTER**  
The Solar Mounting Group



[www.dige.solutions](http://www.dige.solutions)

Project Description	Minimum Module Produce by DIGE					
Module Power	420	Wp	Modules per rack	32	Modules	
Support sections per rack	4	Sections	Project size	32	Modules	
Number of purlins per rack	2	Purlins	Project size	13.44	kWp	
Module Rows	8	Modules	Grid-tie		Hybrid	
Modules per row	4	Modules	Total system cost	\$17,000.00		\$26,000.00
Number of racks	1	Racks	Price per kWp	\$1,264.88		\$1,934.52
Clamping method	1/4 Point					
Foundation Method	Concrete Base		Delivery			
Number of foundations	8	foundations	Estimated Lead-Times	3 weeks		
Number of foundations/ MWp	694	foundations	Notes			
Foundation post depth below MGL	1100/900	mm(front/back)				
25Kw SMA Inverter	1					
Schletter rigid 32 Module rack	1					



[www.dige.solutions](http://www.dige.solutions)